



Collaborative Hope Building:

Our Approach to Poverty Reduction

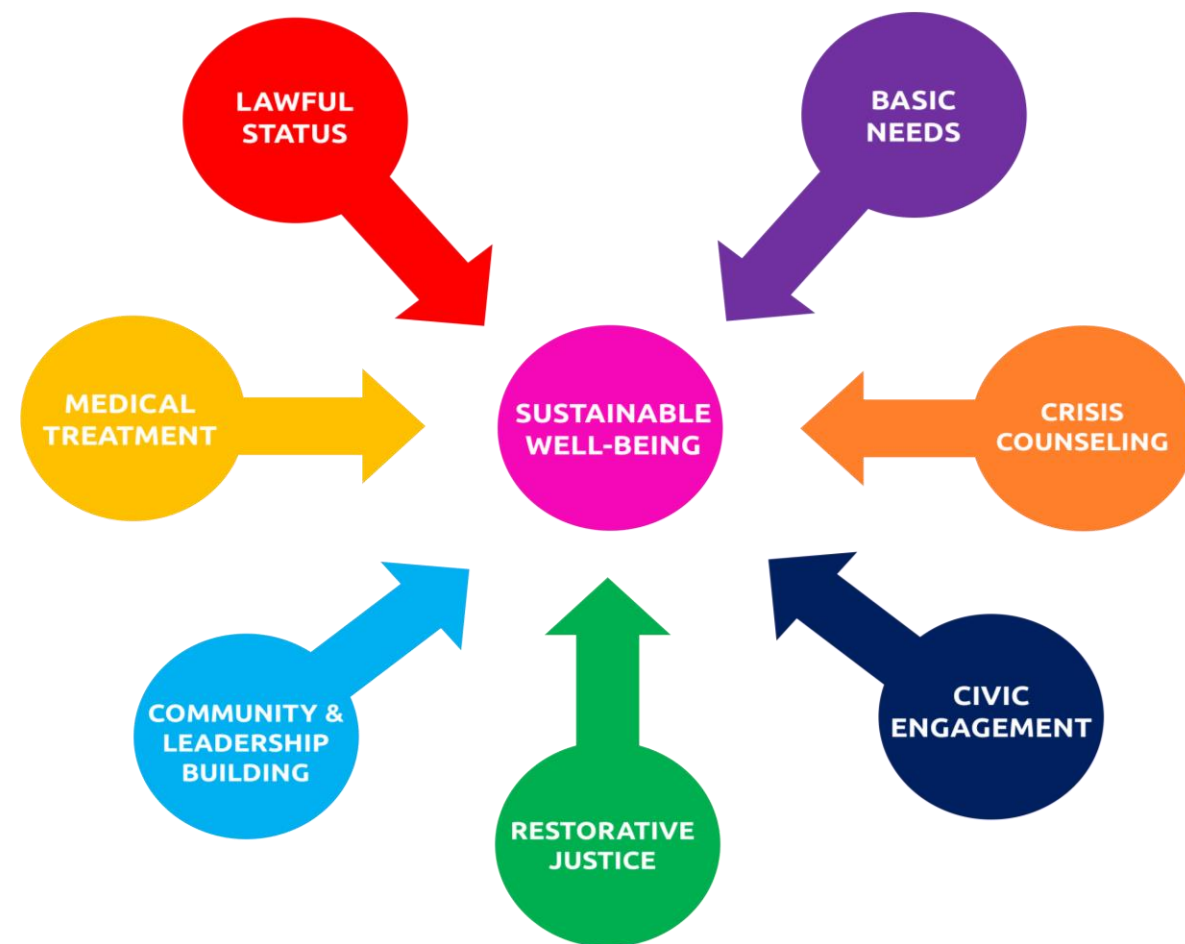
The Daniel Society Center for Global Initiatives confront global poverty through its Compassion-In-Action Initiative and Basic Needs Refugee Initiative. The Center designs poverty reduction projects to lift people out of extreme poverty and bring healing to the sick. We apply a Collaborative Hope Building Model to achieve successful outcomes. We do this work because all lives have value, purpose and potential.

Step 1: We begin with the most **vulnerable people** and their well-being.



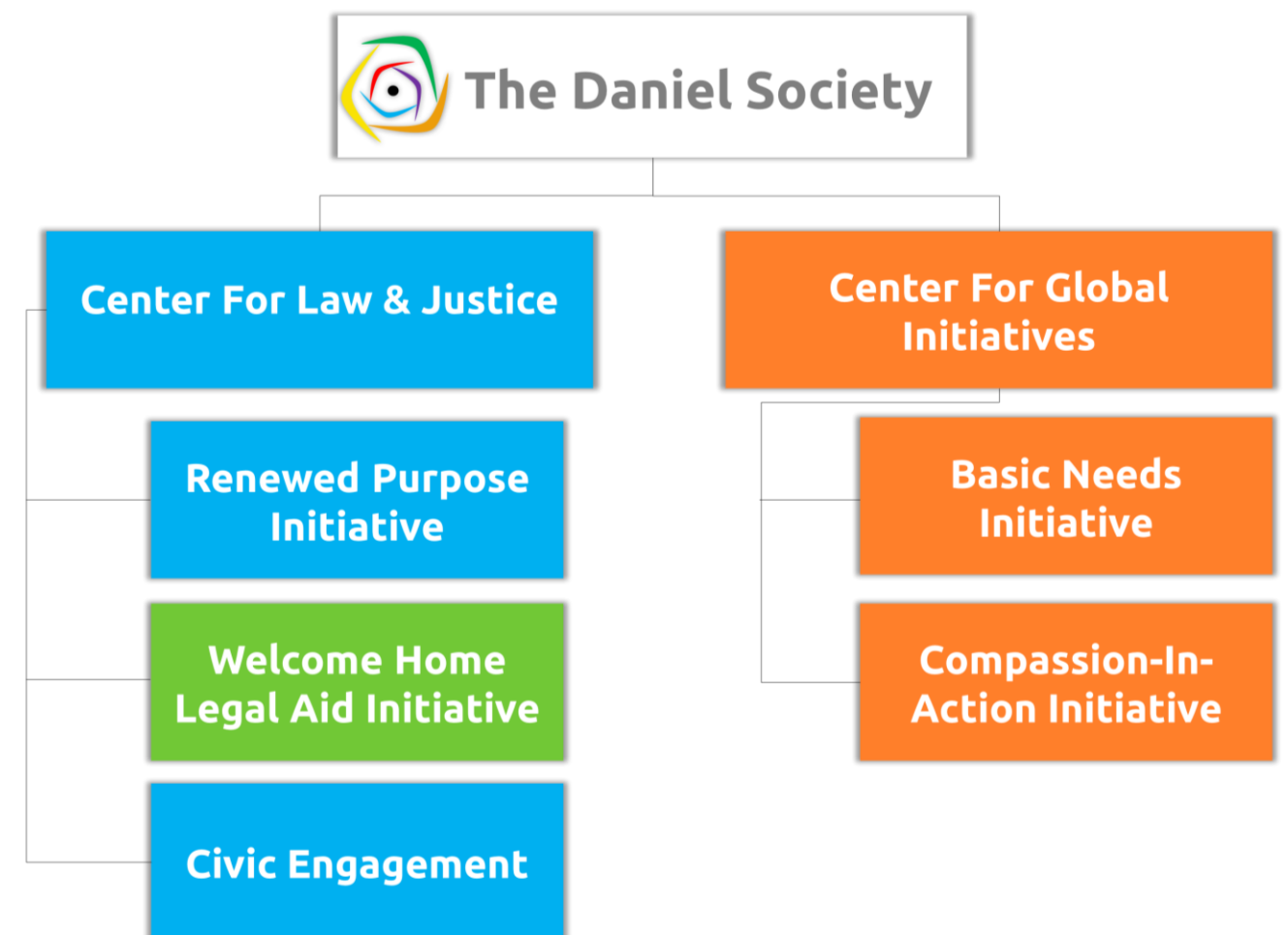
The Center for Global Initiatives targets the poorest of the poor and vulnerable people who have traditionally been marginalized, abused and ignored. We narrow our target population by gender, age, geography, medical condition and risk factor. We target (1) refugees and migrants in detention centers or displacement camps in Africa and Europe; (2) poor, uneducated girls and women in Southeast Asia; (3) young women, children and incarcerated individuals living with HIV/AIDS in Sub-Saharan Africa; and (4) ethnic minority families living in poverty in rural China.

Step 2: We analyze the needs of vulnerable people and identify a combination of targeted **resources**, **knowledge** and **services** that are proven to meet those needs.



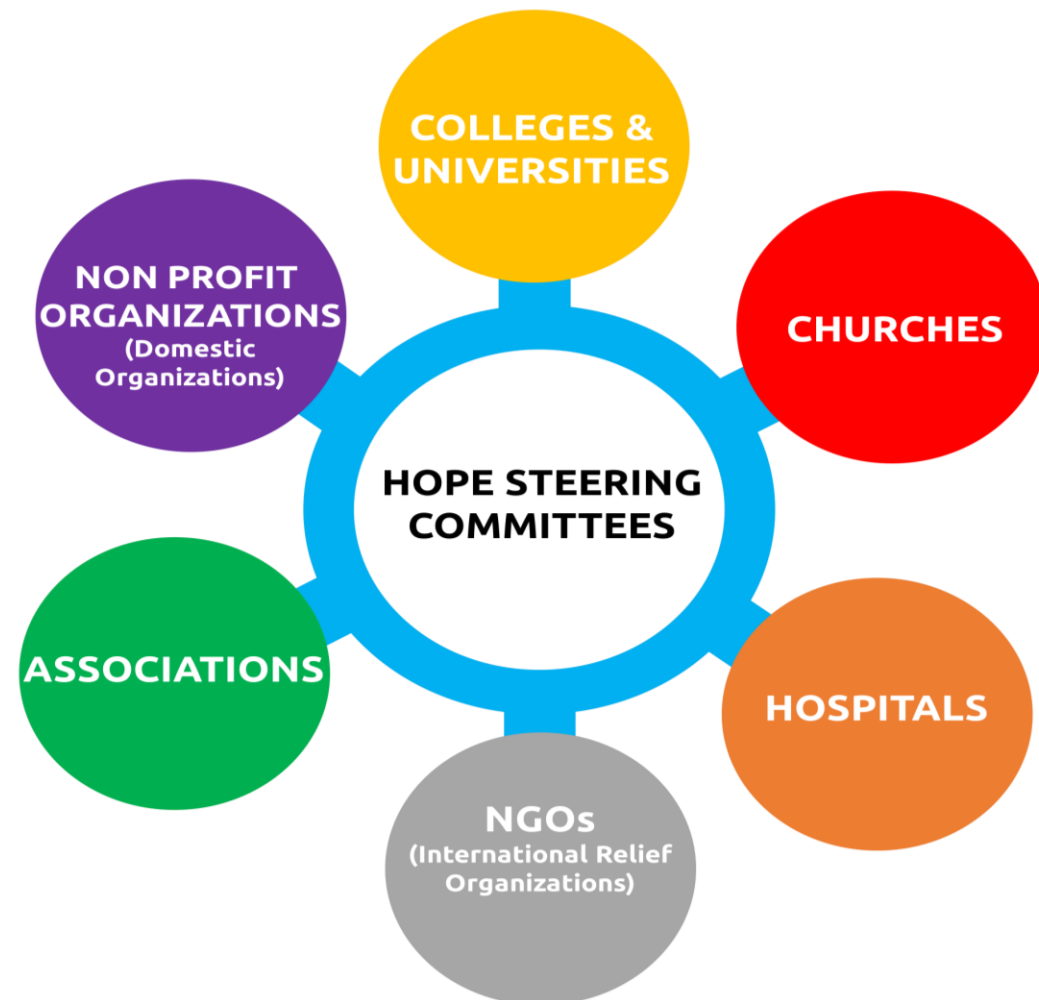
The Center for Global Initiatives conduct an assessment of our target population, their needs, country conditions and other factors that interfere with their well-being. The needs are then logically related to the services and outcomes that we seek. We scale our programs appropriately to obtain the greatest impact from our investment. We plan wisely for future growth of our programs so that we may help larger numbers of people achieve sustainable well-being.

Step 3: We design and deliver initiatives that are **culturally competent**, **strengthen families** and **sustain well-being**.



The Center for Global Initiatives' approach to poverty reduction is not a "one-size fits all" model. We tailor our initiatives by recognizing differences in culture among our target populations, and we respect such differences. Our initiatives also target the well-being of the whole family and we will engage the family in our programs and services.

Step 4: We engage key civil society institutions and organizations to band together on **Hope Steering Committees** to implement the initiatives.



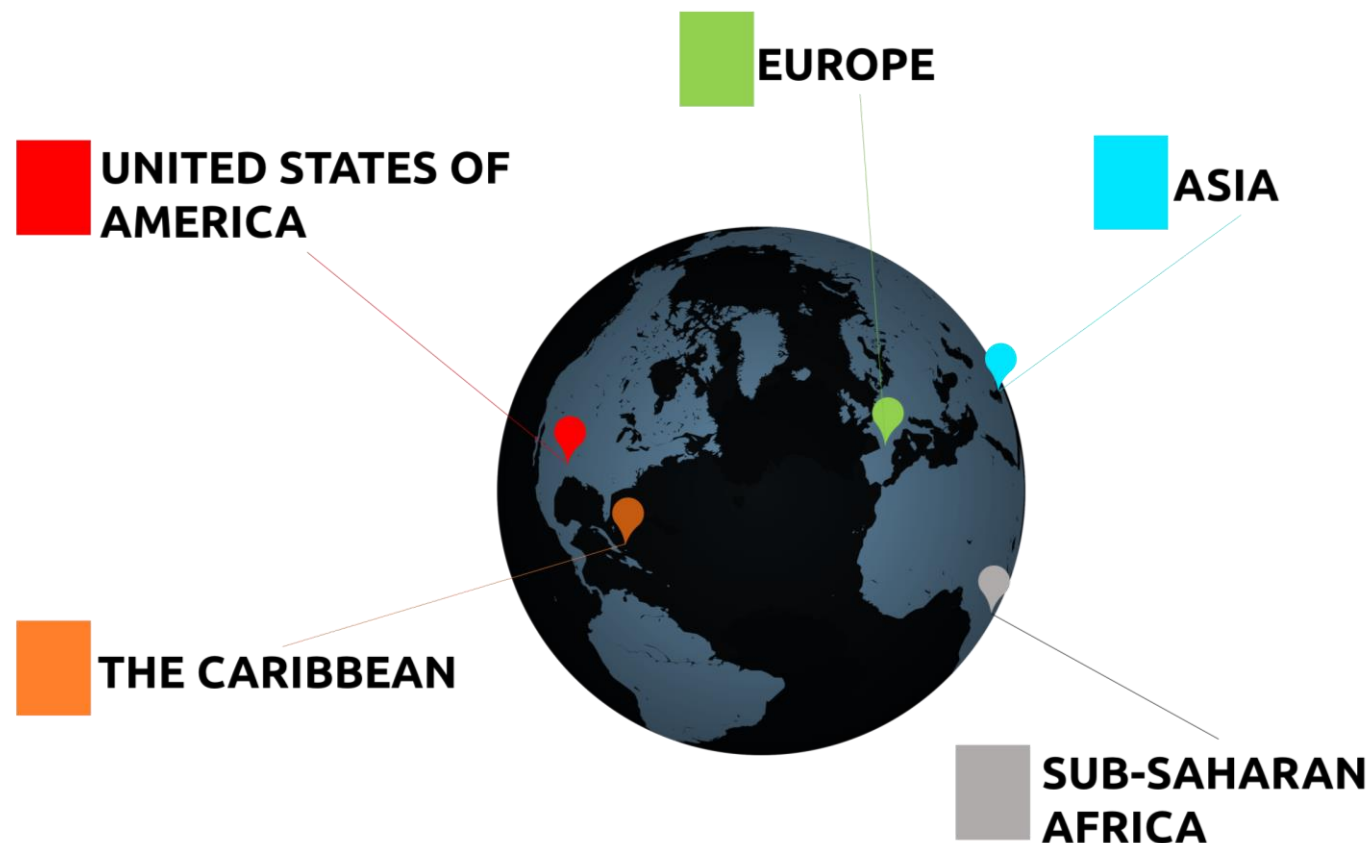
One of the key components of our Collaborative Hope Building Model is engaging civil society institutions, organizations, government and the philanthropic community to provide an accountability body for our initiatives. The Center for Global Initiatives leads and facilitates these Hope Steering Committees and provides ongoing technical assistance to ensure the success of the initiatives.

Step 5:

We empower people and give them a voice by teaching them service-oriented leadership, accountability and community building.

The Center for Global Initiatives will empower the people we serve by collaborating with them to design and implement the initiatives. Program participants will provide feedback at each critical phase of the program. Feedback will be collected by conducting one-on-one interviews, focus groups and distributing surveys. People will also learn leadership and community building skills for a more long-term impact.

Step 6: We work globally in neighborhoods and regions that are facing the **highest rates** of **poverty** and **injustice**.



The Center for Global Initiatives concentrates its work in the areas that demonstrate the greatest economic and social need. We strategically assess the political and economic stability of the countries where we work and how such stability impacts the future well-being of people living in extreme poverty.

Step 7:

We hold ourselves **accountable** for good outcomes by **measuring the success** of our initiatives to sustain well-being.



Our programs are results-oriented and designed to achieve very specific results. Each program begins with the end in mind. We set ambitious, yet achievable goals for excellent program quality and sustainable well-being. The programs will be evaluated to determine whether the design and implementation are effective in achieving our goals.

The Daniel Society Center for Global Initiatives

81 Prospect Street, Brooklyn, New York 11201

Email: info@danielsociety.org Phone/Fax: 718. 989. 2161

Web: www.danielsociety.org

Copyright © 2016 The Daniel Society, Inc. All rights reserved.